

# HB18UV PRO

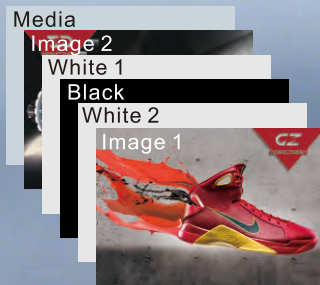


## Mesh Belt 1.8M UV Printer

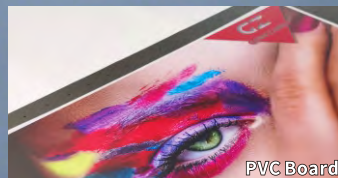
Classical Heavy Duty Body & Excellent Performance



### Multi-Layer Printing



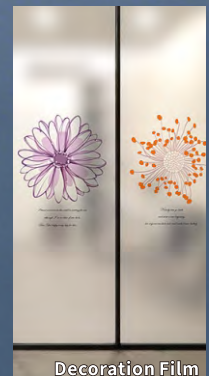
## Hybrid for flexible & rigid substrates printing



PVC Board

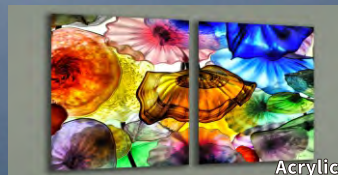


Backlit Shelter



Decoration Film

### Glossy & Matt Varnish Performance



Acrylic



Multi-Layer Printing



White Ink Recirculation



Powerful Blower for 3 Zoens

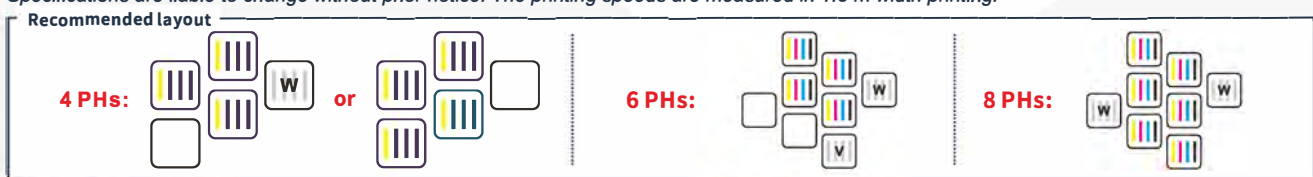


Anti-Collision Unit

# HB18UV PRO

ITEM	SPECIFICATION				
Model	HB18UV PRO				
Print Head	4~8 Epson I3200 U1 Print Heads				
Technology	Piezo Variable Dot (Greyscale)				
Curing System	Duel Water Cooling LED UV Lamps				
Ink	Greenguard Gold REI-3 UV Ink				
Color Config.	KCMY; KCMY+W; W+KCMY+V				
Ink Supply System	Bulk Ink Supply System + White Ink Recirculation & Stirring System				
Ink Tank	1500ml				
Printing Width	Max. 1850mm				
Media Type	Flexible Media: Ceiling Film, Vinyl, Backlit, Fabric, Wall Paper, Leather..... Rigid Media: PVC Board, Foam Board, Corrugated Paper, Aluminum Sheet, Wood.....				
Roll Diameter	Max. 300mm				
Roll Weight	Max. 50KGS				
Core Diameter	3 in (76.2mm) or 2 in (50.8mm)				
Printing Speed	Mode	Resolution	Color(3H)	CWC	CWKWC
	Draft	720X1200 dpi	59m <sup>2</sup> /h	39m <sup>2</sup> /h	15.4m <sup>2</sup> /h
	Production	720X1200 dpi	53m <sup>2</sup> /h	33m <sup>2</sup> /h	12.5m <sup>2</sup> /h
	High-Res	720X1800 dpi	47.4m <sup>2</sup> /h	27m <sup>2</sup> /h	11m <sup>2</sup> /h
	Photo	720X1800 dpi	41m <sup>2</sup> /h	21m <sup>2</sup> /h	8m <sup>2</sup> /h
Data Interface	External: USB3.0; Internal: Fiber Optical				
Working Environment	Temp. 23°C~29°C, Humidity: 50%~80%				
Software	FlexiPRINT / ONYX (Optional)...+ GZ Printer Manager				
Power	Single-Phase, 50Hz/AC, 220V±10%, 12A (Printer) + 8A (UV Controller)				
Packed / Installed Size	LxWxH(mm): 3900x1150x1830 / 3740x1407x1581				
G.W. / N.W.	1714KGS / 1384KGS				

Specifications are liable to change without prior notice. The printing speeds are measured in 1.8 m width printing.



### Belt System with Extension Tables

Industrial hybrid design to ensure precise media delivery and good printing performance for flat & roll materials.



### Multi-Layer Printing Application

Particularly designed for multi-layer applications: colorful; 2layers:W+C/C+W; 3layers:CWC; 4layers:CKWC-Day and Night; 5layers:CWKWC on demand with fine details.



### White Ink Recirculation System

The white ink is circulated at regular intervals during idle time to prevent pigment sedimentation that leads to malfunctions of the print head.



### Optional Glossy & Matt Varnish Application

Max 8 heads for free-choice head layout (Different location for varnish) can reach glossy or matt performance.

## Zhejiang Gongzheng Intelligent Equipment Co., Ltd.

Add: Miaobei Village, Yongjia County, Wenzhou City, Zhejiang Province, China 325102

Tel: +86-577-67319778

Email: ceo@plateforme-imprimeur.fr

Web: www.plateforme-imprimeur.fr



### Authorized distributor:

PLATEFORME IMPRIMEUR SAS  
17, Rue d'Athenes 13127 Vitrolles  
Tva : FR38.939.934.212  
Siret : 939.934.212.00019  
Sas au capital social de 20,000<sup>00</sup>€